



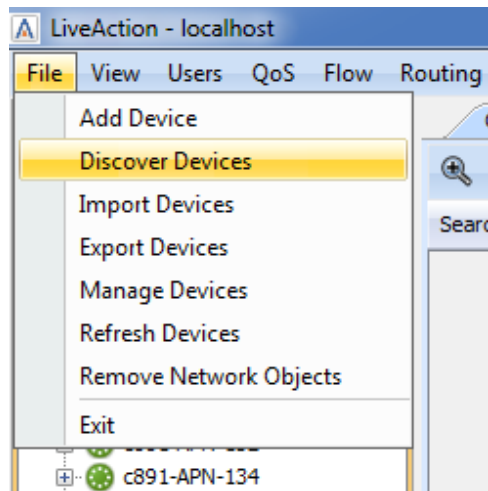
## Summary

Currently LiveNX cannot bring Cisco WLC5500 in as managed devices. While this means that LiveNX cannot configure the device to export Flow, instead a user can make the correct configuration changes to receive flow by following this guide.

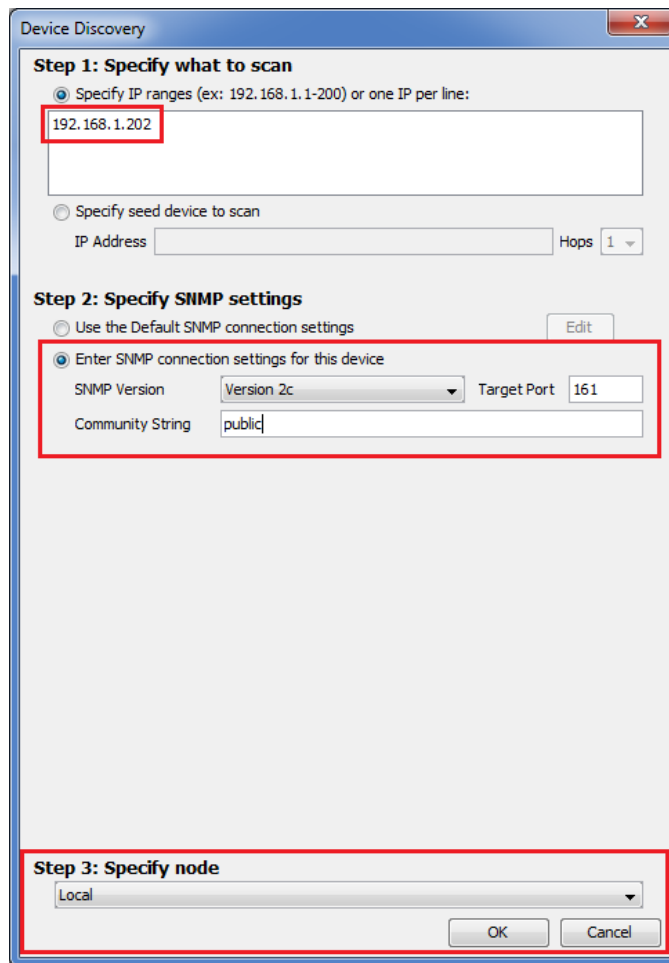
Questions? Contact [support@liveaction.com](mailto:support@liveaction.com).

## Add your Cisco WLC 5500 into LiveNX as an unmanaged device

To add your Cisco WLC 5500 as an unmanaged device, first select “File” and then “Discover Devices”.



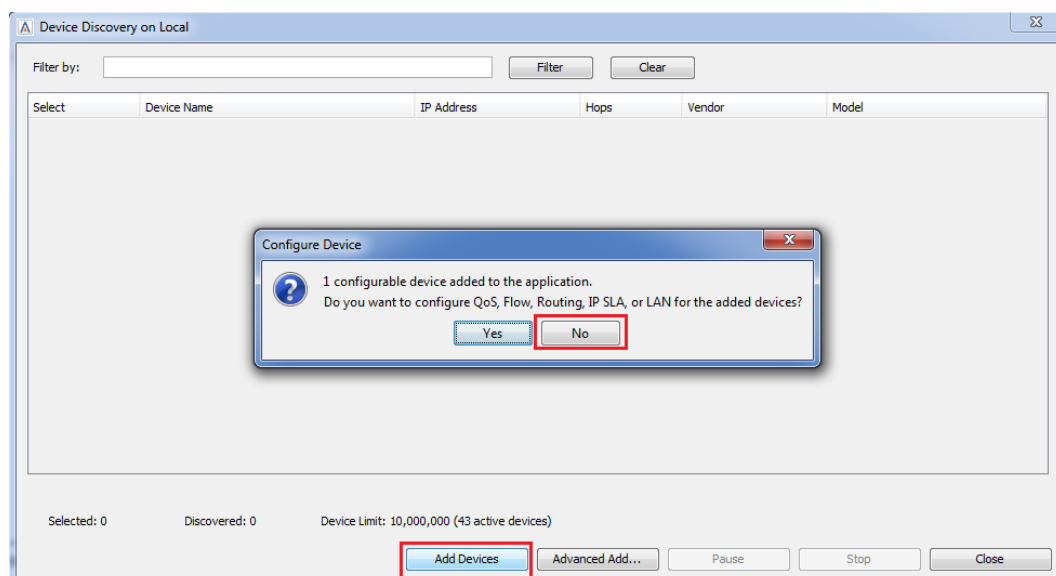
On the “Device Discovery” dialogue, please enter the IP Address, SNMP Credentials, and select the correct “Node” if necessary.



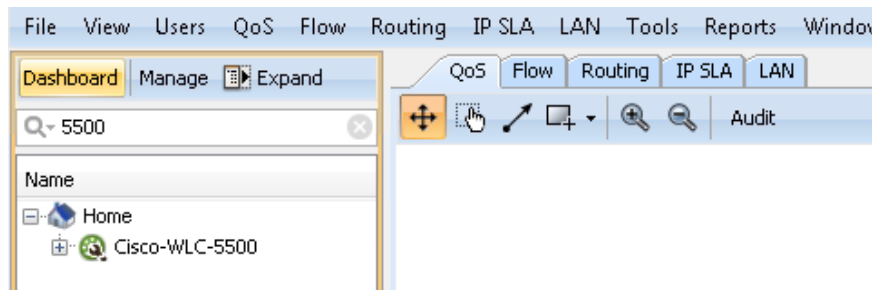
You should see the device being discovered in the Device Discovery Window.



Please select "Add Devices", and when prompted to Configure the Device, please select "No".

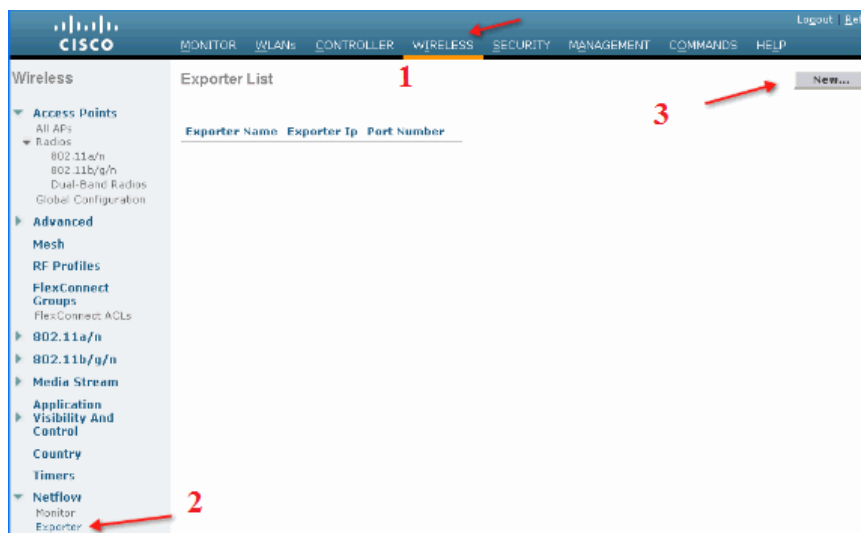


You should now see the device in LiveNX with a wrench over the device's green circle, meaning the device is not configured.



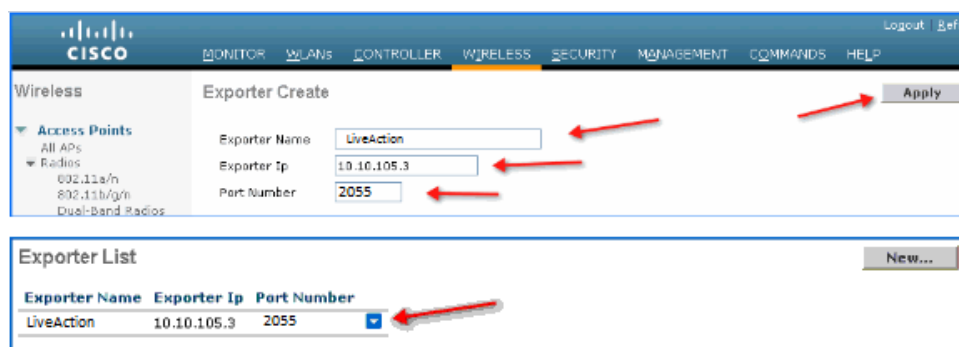
## Configure NetFlow Exporter using the GUI for your WLC5500

First please select "Wireless" then under "NetFlow" you should see "Exporter", select it, then please select "New".



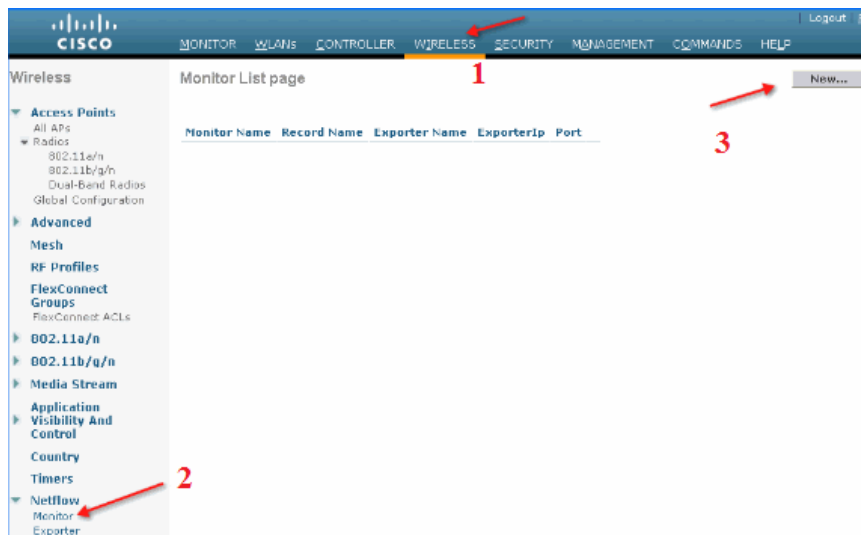
Next please name the exporter "LiveNX Exporter", next set the exporter IP to that of the LiveNX Server. Please set the port number to "2055".

\*Please note that only one exporter can be configured for aWLC!



## Configure NetFlow Monitor using the GUI for your WLC5500

After creating your Exporter, a Monitor is also needs to be created. Please select "Wireless", then under "NetFlow" please select "Monitor" and then "New".



Please give the Monitor a name of "LiveNX Monitor" and select "Apply".



After the monitor has been applied it is necessary to map it to the exporter created earlier. Please click the "LiveNX Monitor".



From here you need to select the created "LiveNX Exporter" from the dropdown, and then select "ipv4\_client\_app\_flow\_record" from the drop down, and then click "Apply".

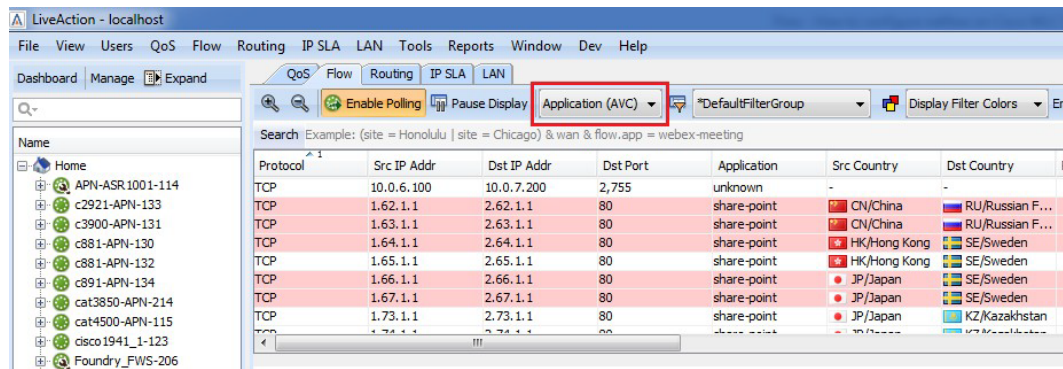


Finally you will need to map the LiveNX NetFlow monitor to the WLAN. To do this please select "WLANs", then the "QoS" tab and from here you can select the created NetFlow monitor!



**Note:** Application Visibility has to be enabled for the NetFlow Monitor to work.

When completed you should be able to go into LiveNX, select your WLC 5500 and verify flows are coming in under the "AVC".



If you have any questions about this guide, or just have LiveNX questions in general, please don't hesitate to contact [support@liveaction.com](mailto:support@liveaction.com)